

713 W Boynton Beach Blvd
 Boynton Beach, FL 33426

Proposed pad site for
 QSR, medical and retail

327 Plaza Real Blvd, Suite 301,
 Boca Raton, FL 33432
www.thurretail.com
 561-395-2441

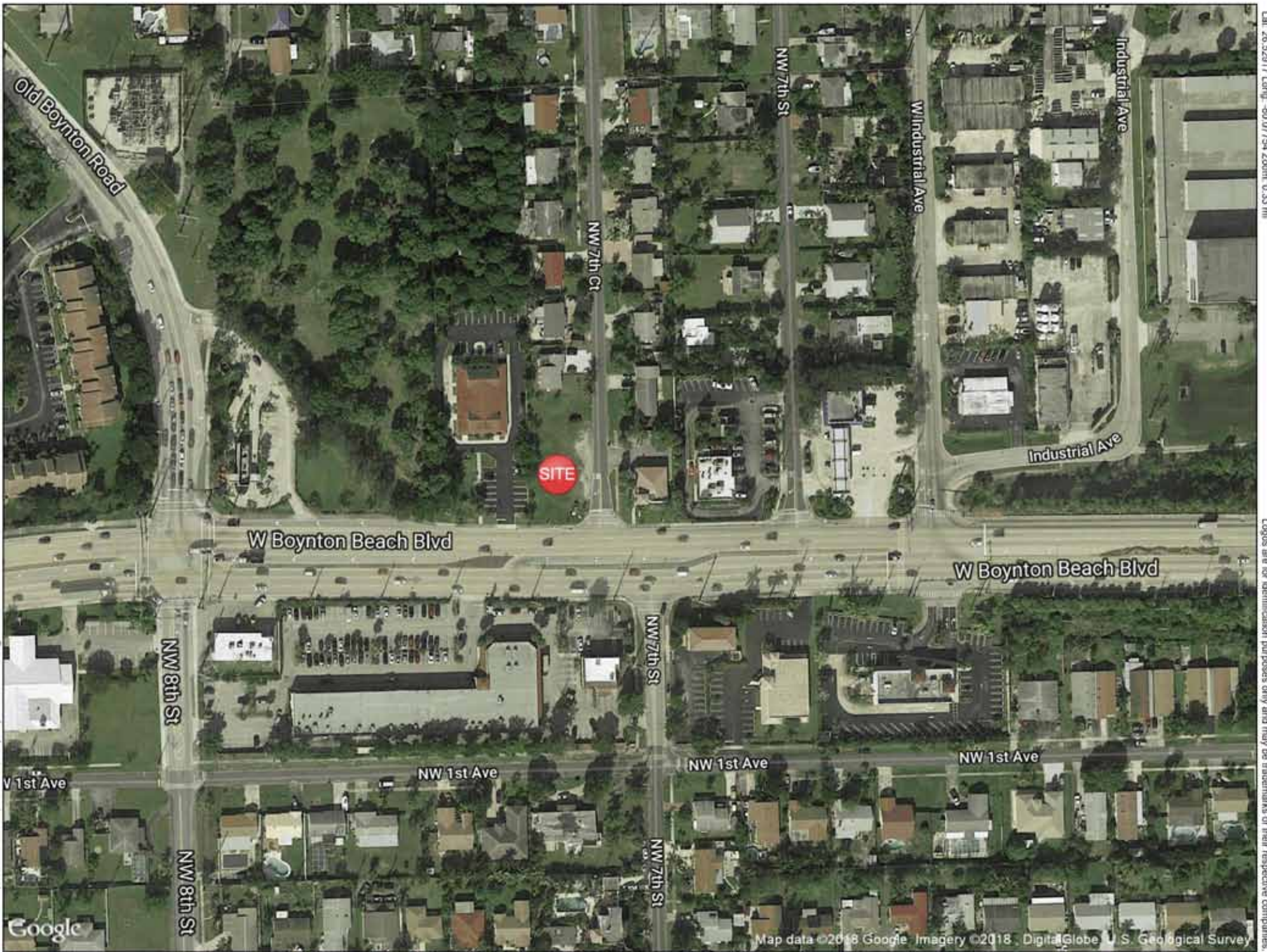
1054 31st St NW, Suite 115,
 Washington, DC 20007
www.thurassociates.com
 202-823-4444

Highlights

- Lot Size: .30 acre (12,807 SF) hard corner lot
- C-2 Zoning
- Immediate access to I-95 with frontage on Boynton Beach Boulevard
- Traffic Counts approx: 49,000 cars per day

Contact: George Sarkisian, Esq.
 Cell: 561-322-8713
 Direct: 561-226-1798 |
 email: george@thurassociates.com





SUMMARY PROFILE

2000-2010 Census, 2018 Estimates with 2023 Projections

Calculated using Weighted Block Centroid from Block Groups



Lat/Lon: 26.5289/-80.0779

RS1

713 W Boynton Beach Blvd

Boynton Beach, FL 33426

1 mi radius 3 mi radius 5 mi radius

	1 mi radius	3 mi radius	5 mi radius	
POPULATION	2018 Estimated Population	13,602	105,088	229,138
	2023 Projected Population	14,513	112,212	244,577
	2010 Census Population	12,391	92,663	204,795
	2000 Census Population	12,065	83,373	179,253
	Projected Annual Growth 2018 to 2023	1.3%	1.4%	1.3%
	Historical Annual Growth 2000 to 2018	0.7%	1.4%	1.5%
	2018 Median Age	41.1	43.8	45.3
	HOUSEHOLDS	2018 Estimated Households	5,161	45,185
2023 Projected Households		5,365	47,010	101,330
2010 Census Households		4,856	40,542	88,683
2000 Census Households		4,947	37,113	78,693
Projected Annual Growth 2018 to 2023		0.8%	0.8%	0.8%
Historical Annual Growth 2000 to 2018		0.2%	1.2%	1.3%
RACE AND ETHNICITY	2018 Estimated White	51.9%	63.6%	66.8%
	2018 Estimated Black or African American	40.5%	28.0%	24.7%
	2018 Estimated Asian or Pacific Islander	1.9%	2.6%	2.8%
	2018 Estimated American Indian or Native Alaskan	0.3%	0.3%	0.3%
	2018 Estimated Other Races	5.5%	5.5%	5.3%
	2018 Estimated Hispanic	15.4%	17.0%	16.6%
INCOME	2018 Estimated Average Household Income	\$63,331	\$70,720	\$77,375
	2018 Estimated Median Household Income	\$46,714	\$55,463	\$60,082
	2018 Estimated Per Capita Income	\$24,163	\$30,471	\$32,958
EDUCATION (AGE 25+)	2018 Estimated Elementary (Grade Level 0 to 8)	6.6%	6.3%	5.8%
	2018 Estimated Some High School (Grade Level 9 to 11)	10.0%	7.7%	6.5%
	2018 Estimated High School Graduate	29.7%	27.9%	26.4%
	2018 Estimated Some College	24.6%	21.3%	21.2%
	2018 Estimated Associates Degree Only	10.9%	9.4%	9.4%
	2018 Estimated Bachelors Degree Only	11.4%	18.8%	20.0%
	2018 Estimated Graduate Degree	6.7%	8.7%	10.8%
BUSINESS	2018 Estimated Total Businesses	675	4,347	9,354
	2018 Estimated Total Employees	7,676	41,240	76,855
	2018 Estimated Employee Population per Business	11.4	9.5	8.2
	2018 Estimated Residential Population per Business	20.2	24.2	24.5

This report was produced using data from private and government sources deemed to be reliable. The information herein is provided without representation or warranty.

Contact: George Sarkisian, Esq.
 Cell: 561-322-8713
 Direct: 561-226-179 |
 email: george@thurassociates.com